



Product Catalogue 2021



THE RIGHT CHOICE OF MOTORIST

Company Profile

M.N. AUTO PRODUCTS (P) LTD.,
came into existence in the year 2004,

MANUFACTURING :

Buzzers, Flashers, Melody Makers, Horn controllers, Relays,
Wiring Harnesses, Reverse Horns, Cell Phone chargers,
Bulb holders / Fuse Boxes, Switches, Devotional Chanters,
Wide Range of LED LAMPS, PVC Insulated cable
for automobile applications.

The Company runs its unit in its own land having a
built up area of 15,000 sq. ft. With injection molding,
soldering machines, spot welding machines, coil welding
machines, ovens, oscilloscope and machines for
manufacturing relays and all testing equipment for quality
assurance. The unit is well equipped with uninterrupted
power supply for all its operations. TUV Rheinland certified
company as **ISO 9001 : 2000** in the year 2005, and upgraded to
ISO 9001 : 2015. The company has a wide customer base
in Tamil Nadu, Kerala, Karnataka, Andhra Pradesh,
Telangana, Maharashtra, Gujarat apart from few
OE manufacturers.

The Company constantly does R&D to keep pace
with the changing trend in the present day industry.

Reputation

Larger Product Portfolio

Effective Working Team

HIGHER PRODUCTION RELIABILITY

Giving You High Quality Automobile Products



Product Name

Page No.

Chargers / Converters	3
LED Lamps / Battery Terminals / Wire Terminals	4
Power Sockets / Wiring Harnesses / Cable Ties	5
LED Lamps / Converters	6
LED Lamps	7
LED Lamps	8
LED Lamps	9
LED Lamps	10
LED Lamps	11
LED Lamps	12
LED Lamps / Bulb Tester	13
LED Lamps / Covers	14
LED Lamps	15
LED Lamps	16
LED Lamps	17
LED Lamps	18
LED Lamps	19
LED Lamps / Wires	20
Buzzers / Melody Makers / Reversing Horns	21
Flashers	22
Switches	23
Switches	24
Relays	25
Relays	26
Relays / Timers / Safar Duva / Cigarette Lighters	27
Fuses	28
Fuse Boxes / Fuse Holders	29
Fuse Holders / Bulb Holders	30
Bulb Holders / Wire Connectors	31
Wiring Harnesses / Wiring Kits	32
Wiring Harnesses / Wiring Kits	33
Mobile Phone / Smart Phone Chargers	34
Charger & Data Cable / Battery Terminals	35
Wire Terminals / Battery Clips	36
Auto Bulbs	37

CHARGERS / CONVERTERS

HB SWITCH - 2 WHEELER MOBILE CHARGER

NEW

3.1 AMPS

PART No. 1810



TRAVEL ADAPTER

NEW

2.4 AMPS

PART No. 1626



MOBILE CHARGER - SCOOTER MODEL

NEW

3.1 AMPS

PART No. 1627



MICRO CONVERTER

NEW


VOLTAGE	PART No.
12V - 24V (COMMON)	1638 A



LED LAMPS / BATTERY TERMINALS / WIRE TERMINALS

LED LAMPS

NEW



VOLTAGE	WHITE	YELLOW
12V	2895W	2895Y

(BOLERO MODEL)

LED LAMPS

NEW




VOLTAGE	WHITE	YELLOW
12V - 24V (COMMON)	2894W	2894Y

(12 LED - MAX DLX)

BATTERY TERMINAL - TA AE

NEW



PART No.	VARIETY
2123P	POSITIVE
2123N	NEGATIVE

WIRE TERMINAL - HEAVY DUTY

NEW



PART No. 2124

POWER SOCKETS / WIRING HARNESSES / CABLE TIES

POWER SOCKET

NEW



PART No. 4133

HEAD LAMP WIRING KIT - HB3

NEW



PART No. 1420

CABLE TIE

NEW

LENGTH	WHITE	BLACK
100mm	7102	7102B
150mm	7108	7108B
200mm	7109	7109B
250mm	7110	7110B
300mm	7111	7111B
368mm	7119	7119B
450mm	7120	7120B



LED LAMPS / CONVERTERS

LED LAMPS

**DC
ONLY**

(LED HEAD LAMP - H4 - P43t)

VOLTAGE/COLOURS	VARIETY	WHITE
10-30V	H4-P43t	4101

CONVERTER

VOLTAGE	PART No.
12V	1618
24V	1619

MINI CONVERTER

VOLTAGE	PART No.
12V	1628
24V	1629

LED LAMPS

LED LAMPS



(MINI RUBY)

VOLTAGE	COLOURS	WHITE			
12V		2425	2525	2625	2725
24V		2426	2526	2626	2726

LED LAMPS



(RUBY MODEL)

VOLTAGE	COLOURS	WHITE				N/L BLUE
12V		2421	2521	2621	2721	2423
24V		2422	2522	2622	2722	2424

LED LAMPS



(SILVER MINI)

VOLTAGE	COLOURS	WHITE
12V		2445 W
24V		2446 W

LED LAMPS



(RUBY MODEL MAX)

VOLTAGE	COLOURS	WHITE	N/L BLUE
12V		2409	2413
24V		2410	2414

LED LAMPS

LED LAMPS



(BUS BODY LOTUS MODEL)

VOLTAGE/COLOURS	WHITE	N/L BLUE
12V	2411	2417
24V	2412	2418

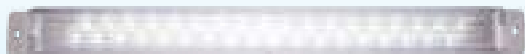
LED LAMPS



(METAL BUS BODY)

VOLTAGE/COLOURS	WHITE	N/L BLUE
12V	2429W	2429WB
24V	2430W	2430WB

LED LAMPS



(SILVER MODEL)

VOLTAGE/COLOURS	WHITE
12V	2405
24V	2406

LED LAMPS

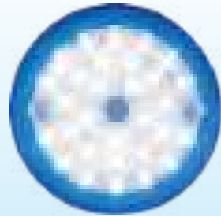


(METAL BUS BODY- DLX)

VOLTAGE/COLOURS	WHITE / BLUE
12V	2439
24V	2440

LED LAMPS

LED LAMPS



(LED LAMP - ROUND DLX)

VOLTAGE / COLOURS	WHITE / BLUE
12V	3311
24V	3312

LED LAMPS



(LED FLASHING LIGHT)

VOLTAGE/COLOURS	WHITE					
12V	2891W	2891B	2891G	2891R	2891RB	2891RG

LED LAMPS



(SMALL ROUND - 90mm)

VOLTAGE/COLOURS	WHITE			
12V	3301	3401	3501	3601
24V	3302	3402	3502	3602

LED LAMPS



(BIG ROUND - 170mm)

VOLTAGE/COLOURS	SWITCH	WHITE				N/LBLUE
12V	W/S	3303	3403	3503	3603	
12V	WO/S	3305	3405	3505	3605	3309
24V	W/S	3304	3404	3504	3604	
24V	WO/S	3306	3406	3506	3606	3310

LED LAMPS

LED LAMPS



(CABIN LIGHT - DLX)

VOLTAGE/COLOURS	WHITE / BLUE
12V	2889
24V	2890

LED LAMPS



(CABIN LIGHT)

VOLTAGE/COLOURS	SWITCH	WHITE	
12V	W/S	2801	
12V	WO/S	2803	
24V	W/S	2802	
24V	WO/S	2804	3204

LED LAMPS



(CABIN LIGHT - MAX MODEL)

VOLTAGE/COLOURS	WHITE	N/L BLUE
12V	2840W	2842WB

LED LAMPS

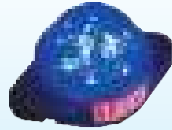


(HANDLE BAR LIGHT)

VOLTAGE/COLOURS	WHITE/AMBER	WHITE/BLUE
12V	2893	2893B

LED LAMPS

LED LAMPS



(50mm DIAMOND DECORATIVE LIGHT)

VOLTAGE/COLOURS	WHITE							
12V	2826W	2926	3026	3126	3226	2826P	2826	
24V	2827W	2927	3027	3127	3227	2827P	2827	

LED LAMPS

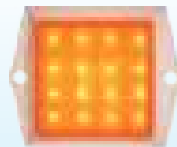
VOLTAGE/COLOURS	WHITE					
12V	2848W	2848B	2848G	2848R	2848A	2848P
24V	2849W	2849B	2849G	2849R	2849A	2849P

(CRYSTAL DECORATIVE LIGHT)



VOLTAGE/COLOURS	RB	RG	RGB	MULTI	FLASH BLUE
12V	2848RB	2848RG	2848RGB	2848M	2848FB
24V	2849RB	2849RG	2849RGB	2849M	2849FB

LED LAMPS



(SQUARE DECORATIVE LIGHT)

VOLTAGE/COLOURS	WHITE						DUAL	MULTI
12V	2818W	2918	3018	3118	3218	2818P	2818	2820
24V	2819W	2919	3019	3119	3219	2819P	2819	2821

LED LAMPS



(ROUND DECORATIVE LIGHT)

VOLTAGE/COLOURS	WHITE						MULTI
12V	2816W	2916	3016	3116	3216	2816P	2816
24V	2817W	2917	3017	3117	3217	2817P	2817

LED LAMPS

LED LAMPS



(DECORATIVE LIGHT - DISCO MODEL)

VOLTAGE/COLOURS	MULTI
12V	2887
24V	2888

LED LAMPS



(LED MINI SIDE INDICATOR - WATER PROOF)

VOLTAGE/COLOURS	WHITE				
12V	3904W	3904B	3904G	3904R	3904A
24V	3905W	3905B	3905G	3905R	3905A

LED LAMPS



(LED SIDE INDICATOR - DELUXE MODEL)

VOLTAGE/COLOURS	WHITE				
12V	3908W	3908B	3908G	3908R	3908A
24V	3909W	3909B	3909G	3909R	3909A

LED LAMPS



(SIDE INDICATOR - DLX)

VOLTAGE/COLOURS	WHITE								
12V	3918W	3918B	3918G	3918R	3918A	3918P	3918RB	3918RG	3918BG
24V	3919W	3919B	3919G	3919R	3919A	3919P	3919RB	3919RG	3919BG

LED LAMPS / BULB TESTER

LED LAMPS



(LED SIDE LIGHT - 28B SMALL FLAT MODEL)

VOLTAGE / COLOURS	Orange	Red	Blue	Green	Yellow
12V	3906A	3906RB	3906RG	3906BG	
24V	3907A	3907RB	3907RG	3907BG	

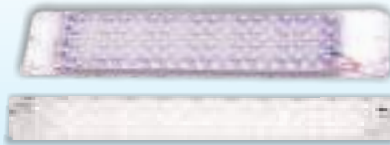
LED LAMPS



(LED SIDE LIGHT - 28B FLAT MODEL)

VOLTAGE / COLOURS	Orange
12V	3916A
24V	3917A

LED LAMPS



(LED ROOF LIGHT - FREEZER MODEL)

VOLTAGE / COLOURS	WHITE	WHITE
12V	2435W	2437W
24V	2436W	2438W

BULB TESTER



PART No.
2203

LED LAMPS / COVERS

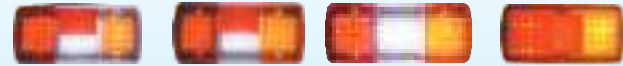
LED LAMPS



(LED TAIL LAMP ASSEMBLY - 4 CHAMBER)

VOLTAGE/COLOURS	VARIETY	TA	AL
12V	LEFT	2846TL	2846L
	RIGHT	2846TR	
24V	LEFT	2847TL	2847L
	RIGHT	2847TR	

LED LAMPS



(LED TAIL LAMP ASSEMBLY - 3 CHAMBER)

VOLTAGE/COLOURS	VARIETY	AC TYPE-2	AP TYPE-4	AP TYPE-3	AC TYPE-1
12V	LEFT	2861L	2860L	2859	2864
	RIGHT	2861R	2860R		

4 CHAMBER COVER



AL
2896



TA
2897

LED LAMPS



(F1 BRAKE LIGHT)

VOLTAGE/COLOURS	WHITE	RED	GREEN
12V	2431W	2431B	2431R

LED LAMPS

LED LAMPS



(LED TAIL LAMP - MINI)

VOLTAGE	COLOURS	WHITE				
12V		4001W	4001B	4001R	4001A	4001G
24V		4002W	4002B	4002R	4002A	4001G

LED LAMPS



(LED TAIL LAMP - MAX)

VOLTAGE	COLOURS	WHITE			
12V		4003W	4003B	4003R	4003A
24V		4004W	4004B	4004R	4004A

LED LAMPS

(MEGA LIGHT)
(PLASTIC BODY)



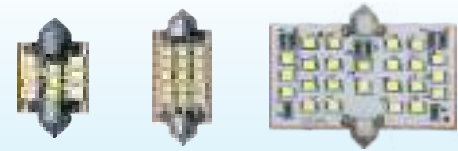
VOLTAGE	COLOURS	WHITE
12V		2443W
24V		2444W

(MEGA LIGHT)
(ALUMINIUM BODY)



VOLTAGE	WHITE
12V - 24V	2448 A
COMMON	

LED LAMPS



(LED CAR ROOF LIGHT)

VOLTAGE	COLOURS	30mm	42mm	44mm	TOURIST
12V		2812	2813	2814	2815

LED LAMPS

LED LAMPS



(PARK LIGHT - 4 LED)

VOLTAGE/COLOURS	WHITE				
12V	2828	2928	3028	3128	3228
24V	2834				

LED LAMPS



(PARK LIGHT - T15 & T10)

VOLTAGE/COLOURS	WHITE					
12V	2862W	2862B	2862G	2862R	2862A	2862M

LED LAMPS



(LED INDICATOR LIGHT - TYPE 67)

VOLTAGE/COLOURS	
12V	2830M
24V	2831M

LED LAMPS



(PARK LIGHT - 10mm LED)

VOLTAGE/COLOURS	WHITE			
12V	3105	2905	3005	2808

LED LAMPS

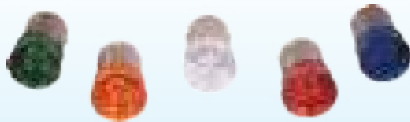


(PARK LIGHT - TD BULB)

VOLTAGE/COLOURS	WHITE					MULTI
12V	2844W	2844B	2844G	2844R	2844A	2844M
24V	2845W	2845B	2845G	2845R	2845A	2845M

LED LAMPS

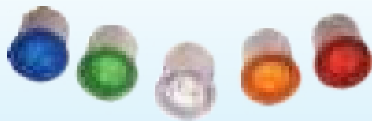
LED LAMPS



(LED INDICATOR LIGHT- DELUXE MODEL)

VOLTAGE/COLOURS	WHITE				
	12V	2838W	2838B	2838G	2838R
24V	2858W	2858B	2858G	2858R	2858A
12V	2839W	2839B	2839G	2839R	2839A

LED LAMPS



(LED INDICATOR LIGHT - ECO MODEL)

VARIETY	VOLTAGE/COLOURS	WHITE				
STRAIGHT PIN	12V	2871W	2871B	2871G	2871R	2871A
CROSS PIN	12V	2873W	2873B	2873G	2873R	2873A

LED LAMPS



(LED INDICATOR - 6 LED)

VOLTAGE/COLOURS	WHITE				
	12V	2875W	2875B	2875G	2875R
24V	2876W	2876B	2876G	2876R	2876A

LED LAMPS



(LED INDICATOR LIGHT - 5 LED)

VOLTAGE/COLOURS	WHITE
12V	2809
24V	2810

LED LAMPS



(LED BRAKE LIGHT - 1016 MODEL)

VOLTAGE/COLOURS	WHITE
12V	2811

LED LAMPS

LED LAMPS



VOLTAGE / COLOURS	WHITE	YELLOW
12V	2867W	2867Y
24V	2868W	2868Y

(6 LED)

LED LAMPS



VOLTAGE / COLOURS	WHITE	YELLOW
12V	2869W	2869Y
24V	2870W	2870Y

(12 LED)

LED LAMPS



VOLTAGE / COLOURS	WHITE	YELLOW
12V	3867W	3867Y
24V	3868W	3868Y

(8 LED)

LED LAMPS



VOLTAGE / COLOURS	WHITE	YELLOW
12V	3869W	3869Y
24V	3870W	3870Y

(16 LED)

LED LAMPS

LED LAMPS



VOLTAGE / COLOURS	WHITE	YELLOW
12V	2879W	2879Y
24V	2880W	2880Y

(O/E FITMENT)

LED LAMPS



VOLTAGE / COLOURS	WHITE
12V	2881

(4 LED)

LED LAMPS



VOLTAGE / COLOURS	WHITE	YELLOW
12V	2879MW	2879MY

(9 LED MINI ROUND)

LED LAMPS



VOLTAGE / COLOURS	WHITE	YELLOW
12V	2881MW	2881MY

(9 LED MINI SQUARE)

LED LAMPS / WIRES

LED LAMPS



(ANGEL)

VOLTAGE / COLOURS	WHITE / WHITE	WHITE / BLUE
12V	2885	2886

LED LAMPS



(6 LED - BAR TYPE)

VOLTAGE / COLOURS	WHITE
12V - 24V COMMON	2883

LED LAMPS



(12 LED - BAR TYPE)

VOLTAGE / COLOURS	WHITE
12V - 24V COMMON	2884

PVC INSULATED CABLES



WIRE	BLACK	BLUE	GREEN	RED	YELLOW	GREY	VIOLET	PINK
4mm	2301	2301B	2301G	2301R	2301Y	2301GY	2301V	2301P

WIRE	BLACK
5mm	2302

PVC INSULATED THIN CABLES



WIRE	BLACK	BLUE	GREEN	RED	YELLOW	GREY	PINK
4mm	2309	2309B	2309G	2309R	2309Y	2309GY	2309P

WIRE	BLACK	BLUE	GREEN	RED	YELLOW	GREY	PINK
5mm	2310	2310B	2310G	2310R	2310Y	2310GY	2310P

BUZZERS / MELODY MAKERS / REVERSING HORNS

BUZZERS



VOLTAGE	PART No.				
12V	1001	1003	1004	1005	1007
VARIETY	AC/DC CONTINUOUS	AC/DC CONTI 3 wire	INTERMITTENT	AC/DC BIRD	DC CONTINUOUS

VOLTAGE	PART No.
24V	1002
VARIETY	DC CONTINUOUS

MELODY MAKERS



VOLTAGE/VARIETIES	4 WIRE	5 WIRE
12V	1201	1202
24V	1203	1204

REVERSE HORN - PIEZO TYPE



VOLTAGE	PART No.
12V	1503
24V	1504

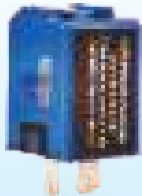
REVERSE HORN - HIGH SOUND



VOLTAGE	PART No.
12V - 48V	4121
COMMON	

FLASHERS

3 PIN FLASHER - ORDINARY



VOLTAGE	PART No.
12V	1101
24V	1102

3 PIN FLASHER - MUSICAL



VOLTAGE	PART No.
12V	1103
24V	1104

2 PIN FLASHER - UNIVERSAL



VOLTAGE	PART No.
12V	1107

2 PIN FLASHER - MUSICAL



VOLTAGE	PART No.
12V	1108

JUMBO FLASHER



VOLTAGE	PART No.
12V	1105
24V	1106

ROUND FLASHER



VOLTAGE	PART No.
12V	1110

BAJ FLASHER - 2 WHEELER



VOLTAGE	PART No.
12V	1111

SWITCHES

PUSH PULL SWITCH



L.ROD-S.HEAD
PART No. **1801**

PUSH PULL SWITCH



L.ROD-B.HEAD
PART No. **1802**

PUSH PULL SWITCH



S.ROD-S.HEAD
PART No. **1803**

TOGGLE SWITCH



PART No. **1804**

HEAD LIGHT SWITCH - HEAVY DUTY



PART No. **1805**

STARTER SWITCH



PART No. **1806**

HANDLE BAR SWITCH - UNIVERSAL



PART No. **1809**

METAL TOGGLE SWITCH



PART No. **1807**

SWITCHES

PIANO SWITCH (ON - OFF)



PART No. 1820

PIANO SWITCH (ON - OFF - ON)



PART No. 1821

PIANO SWITCH (ON - OFF)



PART No. 1822

PIANO SWITCH (ON - OFF - ON)



PART No. 1823

PIANO SWITCH (ON - ON)



PART No. 1824

IGNITION SWITCH



PART No. 1827

MAIN LINE SWITCH



PART No. 1828

WIPER SWITCH



PART No. 1829

IDEAL SWITCH



PART No. 1830

RELAYS

ELECTRONIC HORN RELAY



VOLTAGE/VARIETIES	3 PIN	4 PIN
12V	1301	1321
24V		1322

METAL HORN RELAY



VOLTAGE/VARIETIES	3 PIN	4 PIN
12V	1302	1303

MINI RELAY



VOLTAGE/VARIETIES	4 PIN	5 PIN
12V	1306	1307
24V	1308	1309

MINI RELAY - WITHOUT CLAMP



VOLTAGE/VARIETIES	4 PIN	5 PIN
12V	1306WC	1307WC
24V	1308WC	1309WC

MICRO RELAY



VOLTAGE/VARIETIES	4 PIN	5 PIN
12V	1310	1311
24V	1312	1313

RELAYS

DUAL HEAD LAMP RELAY



VOLTAGE/VARIETIES	PART No.
12V	1304 (40A + 40A)
24V	1305

HEAVY DUTY DUAL HEAD LAMP RELAY - 80Amps



VOLTAGE/VARIETIES	PART No.
12V	1331
24V	1332

STARTER RELAY



VOLTAGE/VARIETIES	PART No.
12V	1314

STARTER RELAY WITH FUSE



VOLTAGE/VARIETIES	PART No.
12V	1315

RELAYS / TIMERS / SAFAR DUVA / CIGARETTE LIGHTERS

ACCELERATOR RELAY



VOLTAGE	PART No.
12V	1316
24V	1319

GLOW PLUG TIMER



VOLTAGE/VARIETIES	IN	SU	AE
12V	1317	1318	1323

SAFAR DUVA



VOLTAGE	PART No.
12V	2201

CIGARETTE LIGHTER



DELUXE

PART No.

4131



ORDINARY

PART No.

4132

FUSES

BLADE FUSE

AMPS	PART No.
5	2001
7.5	2002
10	2003
15	2004
20	2005
25	2006
30	2007
35	2008
40	2009



MINI BLADE FUSE

AMPS	PART No.
5	2017
7.5	2018
10	2019
15	2020
20	2021
25	2022
30	2023



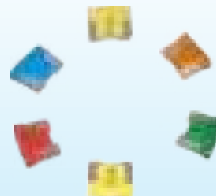
GLASS FUSE - 30mm

AMPS	PART No.
7	2016
10	2010
15	2011
20	2012
35	2015



MICRO BLADE FUSE

AMPS	PART No.
5	2026
7.5	2027
10	2028
15	2029
20	2030
25	2031
30	2032



SLOW BLOW FUSE



AS - TYPE

AMPS	PART No.
40A	2024A
60A	2024
80A	2024B
100A	2024C



BT - TYPE

AMPS	PART No.
40A	2025A
60A	2025
80A	2025B
100A	2025C

FUSE BOXES / FUSE HOLDERS

FUSE BOX - AE



PART No. 1716

FUSE BOX - MV



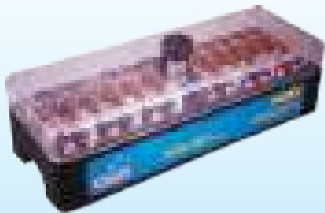
PART No. 1718

FUSE BOX - AP



PART No. 1719

FUSE BOX - TA 407



PART No. 1720

FUSE BOX - JC



PART No. 1721

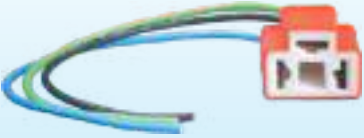
FUSE HOLDER WITH FUSE - HD



PART No. 1715

FUSE HOLDERS / BULB HOLDERS

BULB HOLDER WITH FIN CABLE- CERAMIC



WIRE	4mm	5mm	6mm
PART No.	1704	1705	1706

BLADE FUSE HOLDER WITH FUSE

CERAMIC		PLASTIC		
WIRE	6mm	8mm	WIRE	6mm
PART No.	1707	1709	PART No.	1708

BULB HOLDER - PHOSPHOR BRONZE



WIRE	5mm
PART No.	1710

FUSE BOX - 2 WHEELER



PART No.	1712
----------	------

H1 BULB HOLDER H7 BULB HOLDER



PART No.	1713	PART No.	1714
----------	------	----------	------

FUSE HOLDER - TA INDI



PART No.	1722
----------	------

BULB HOLDERS / WIRE CONNECTORS

H11 BULB HOLDER



PART No. 1723

BULB HOLDER - 9005



PART No. 1724

BULB HOLDER - 9006



PART No. 1725

1 POLE WIRE CONNECTOR



PART No. 2204

2 POLE WIRE CONNECTOR



PART No. 2205

3 POLE WIRE CONNECTOR



PART No. 2206

4 POLE WIRE CONNECTOR



PART No. 2207

6 POLE WIRE CONNECTOR



PART No. 2208

8 POLE WIRE CONNECTOR



PART No. 2209

WIRING HARNESSES / WIRING KITS

HEAD LAMP WIRING KIT WITH HL RELAY



WIRE	FIN	ISI
PART No.	1401	1402

HORN WIRING KIT WITH HORN RELAY



WIRE	MINI	MAX
PART No.	1406	1405

HORN WIRING KIT WITH MELODY MAKER



WIRE	MINI	MAX
PART No.	1408	1407

HEAD LAMP WIRING KIT WITH HL RELAY H1/H7-12V



PART No. **1409**

HEAD LAMP WIRING KIT WITH HL RELAY H7 /H7 -12V



PART No. **1410**

WIRING HARNESSES / WIRING KITS

HORN WIRING KIT WITH MELODY MAKER - 2 WHEELER



PART No. 1411

HORN WIRING KIT WITH 4 PIN HORN RELAY



PART No. 1416

FOG LAMP WIRING KIT



PART No. 1417

HEAVY DUTY WIRING KIT - 80A



PART No. 1419

MOBILE PHONE / SMART PHONE CHARGERS

SMART PHONE CHARGER 3 in 1 - 3.4 A



PART No.
1613A

SMART PHONE CHARGER - 3.4A



PART No.
1622

SMART PHONE CHARGER - SUPER SPEED MODEL 3.1A



PART No.
1623

MOBILE PHONE CHARGER 3 in 1



PART No.
1602

MOBILE PHONE CHARGER 6 in 1



VARIETIES	ORDINARY	USB
PART No.	1606	1608

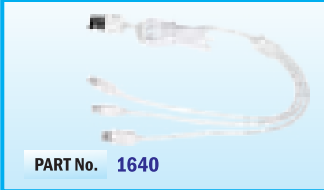
MOBILE CHARGER 4 in 1



PART No.
1625

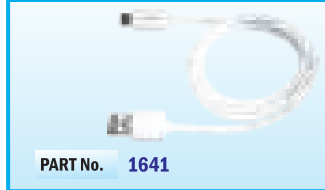
CHARGER & DATA CABLE / BATTERY TERMINALS

3 IN 1 USB CABLE (V8,i5&TYPE 'C')



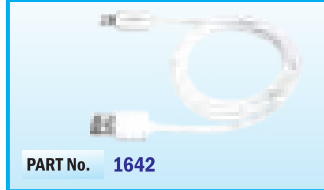
PART No. 1640

USB CHARGE AND DATA CABLE (USB to V8)



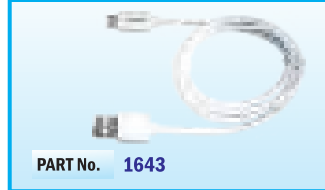
PART No. 1641

USB CHARGE AND DATA CABLE (USB to i5)



PART No. 1642

USB CHARGE AND DATA CABLE (USB to TYPE 'C')



PART No. 1643

STP S 800



PART No.	VARIETY
2113P	POSITIVE
2113N	NEGATIVE

STP S 600



PART No.	VARIETY
2121P	POSITIVE
2121N	NEGATIVE

12 BT



PART No.	VARIETY
2114P	POSITIVE
2114N	NEGATIVE

11 BT



PART No.	VARIETY
2122P	POSITIVE
2122N	NEGATIVE

MRE 220



PART No.	VARIETY
2115P	POSITIVE
2115N	NEGATIVE

TVS 650



PART No.	VARIETY
2116P	POSITIVE
2116N	NEGATIVE

ANGLE 600 FANTOM



PART No.	VARIETY
2117P	POSITIVE
2117N	NEGATIVE

MRE 220 ANGLE



PART No.	VARIETY
2118P	POSITIVE
2118N	NEGATIVE

WIRE TERMINALS / BATTERY CLIPS

<p>WIRE TERMINAL-18</p>  <p>PART No. 2101</p>	<p>WIRE TERMINAL-18M</p>  <p>PART No. 2102</p>	<p>WIRE TERMINAL-18A</p>  <p>PART No. 2103</p>	<p>WIRE TERMINAL-18B</p>  <p>PART No. 2101A</p>	<p>WIRE TERMINAL-2</p>  <p>PART No. 2104</p>
<p>WIRE TERMINAL-2A</p>  <p>PART No. 2105</p>	<p>WIRE TERMINAL-3</p>  <p>PART No. 2106</p>	<p>WIRE TERMINAL-3A</p>  <p>PART No. 2107</p>	<p>WIRE TERMINAL-4</p>  <p>PART No. 2108</p>	<p>WIRE TERMINAL-5</p>  <p>PART No. 2109</p>
<p>WIRE TERMINAL-5B</p>  <p>PART No. 2110</p>	<p>BIG ROUND</p>  <p>PART No. 2111</p>	<p>SMALL ROUND</p>  <p>PART No. 2112</p>	<p>2 WHEELER BATTERY CLIP</p>  <p>PART No. 2120L</p>  <p>PART No. 2120R</p>	

AUTO BULBS



PART No.	VOLTAGE / VARIETY
101	12V - 10W PLAIN - ST.PIN (1210M) - INDICATOR LIGHT
101A	12V - 10W AMBER - CRS.PIN (1210) - INDICATOR LIGHT
102A	12V - 10W AMBER - ST.PIN (1210) - INDICATOR LIGHT
103	12V - 21W PLAIN - ST.PIN (1141)
103A	12V - 21W AMBER - CRS.PIN (1141)
104A	12V - 21W AMBER - ST.PIN (1141)
105	12V - 21W / 5W - 4 WHEELER (1016)
106	12V - 10W / 5W - 2 WHEELER (1016A)

PART No.	VOLTAGE / VARIETY
107	T-10 (12V - 5W)
108	T-10 (12V - 3.4W)
109	T-15 (12V - 16W)
110	TD BULB (53A)
111	12V - 5W (67 BULB)
112	24V - 21W PLAIN (2441)
113	24V - 5W PLAIN (2467)



SUPER

Auto Electrical Products

THE RIGHT CHOICE OF MOTORIST

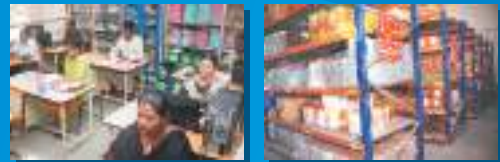
PRODUCT NAME	PART NUMBERS	SECONDARY	MASTER BOX
BUZZERS	ALL PART NUMBERS	25	1500
	1101, 1102, 1103, 1104, 1110	10	500
FLASHERS	1105, 1106	10	200
	1107, 1108, 1111	20	480
MELODY MAKERS	1201, 1202, 1203, 1204	10	200
	1301, 1302, 1303, 1321, 1322	20	-
	1304, 1305	10	200
RELAYS	1306, 1307, 1308, 1309, 1306WC, 1307WC, 1308WC, 1309WC, 1314, 1315, 1331, 1332	10	-
	1310, 1311, 1312, 1313	25	-
ACC RELAYS / TIMERS	1316, 1319, 1317, 1318, 1323	5	-
WIRING HARNESS	1401, 1402, 1405, 1406, 1407, 1408, 1409, 1410, 1416, 1417, 1420	-	48
	1411, 1419	-	-
REVERSE HORNS	1503, 1504 (ALL SOUNDS)	20	240
	1602	10	360
CHARGERS	1606, 1608	5	150
	1613A	5	-
	1622, 1626	10	-
	1623, 1625	10	200
CHARGER CABLES	1640, 1641, 1642, 1643	10	-
CONVERTERS	1618, 1619	-	48
MINI CONVERTERS	1628, 1629	-	70
MICRO CONVERTERS	1638, 1639	5	75
BULB HOLDERS	1704, 1705, 1706, 1710, 1712, 1713, 1714	20	480
	1723, 1724, 1725	20	-
FUSE HOLDERS	1707, 1708, 1709, 1712	20	480
	1715	10	200
	1722	20	-
FUSE BOXES	1716, 1718, 1719, 1720, 1721	-	-
SWITCHES	1801, 1802, 1804, 1804, 1807	10	600
	1805, 1806, 1810	20	-
	1809	20	400
	1820, 1821, 1822, 1823, 1824, 1827, 1828, 1829, 1830	10	-
BLADE FUSES	ALL PART NUMBERS	500	10000
GLASS FUSES	ALL PART NUMBERS	500	-
MINI BLADE FUSES	ALL PART NUMBERS	500	-
SLOW BLADE FUSE - AS TYPE	ALL PART NUMBERS	10	-
SLOW BLADE FUSE - BT TYPE	ALL PART NUMBERS	10	-
MICRO BLADE FUSES	ALL PART NUMBERS	1000	-
	2101, 2101A	2000	-
WIRE TERMINALS	2102, 2103, 2104, 2105, 2106, 2107, 2108	1000	-
	2109, 2110	500	-
	2111, 2112, 2124	100	-
DEVOTIONAL CHANTER - SAFAR DUVA	2201	10	-
WIRE CONNECTORS	2204, 2205, 2206, 2207	20	480
	2208, 2209	10	240
PVC INSULATED CABLES	ALL PART NUMBERS	-	-
SILVER MODEL	ALL PART NUMBERS	20	-
SILVER MINI	ALL PART NUMBERS	20	-
RUBY MODEL MAX	ALL PART NUMBERS	10	-
RUBY MODEL	ALL PART NUMBERS	10	-
MINI RUBY	ALL PART NUMBERS	10	200
BUS BODY - LOTUS MODEL	ALL PART NUMBERS	-	-
METAL BUS BODY	ALL PART NUMBERS	-	-
	2435W, 2436W	20	-
FREEZER MODEL	2437W, 2438W	10	-

PRODUCT NAME	PART NUMBERS	SECONDARY	MASTER BOX
MEGA LIGHT	2443W, 2444W, 2447, 2448	-	-
CABIN LIGHTS	2801, 2802, 2803, 2804, 3204	20	720
CABIN LIGHTS - MAX MODEL	2840W, 2842WB	10	-
CABIN LIGHTS - DELUXE	2889, 2890	12	-
PARK LIGHTS - 4 LED	2828, 2928, 3028, 3128, 3228, 2834	20 Set	-
PARK LIGHT - T15 & T10	2862W, 2862B, 2862G, 2862R, 2862A, 2862M	20 Set	-
PARK LIGHT - TD BULB	ALL PART NUMBERS	200	-
PARK LIGHT - 10mm	2905, 3005, 2808	20 Set	-
CAR ROOF LIGHTS	2812, 2813, 2814, 2815	10	700
SMALL ROUND	ALL PART NUMBERS	10	150
BIG ROUND	ALL PART NUMBERS	20	-
ROUND - DELUXE	3311, 3312	10	-
DECORATIVE LIGHTS - SQUARE	ALL PART NUMBERS	10	500
DECORATIVE LIGHTS - ROUND	ALL PART NUMBERS	10	300
DECORATIVE LIGHTS - 50 mm DIAMOND	ALL PART NUMBERS	10	300
DECORATIVE LIGHTS - CRYSTAL	ALL PART NUMBERS	10	300
DECORATIVE LIGHTS - DISCO MODEL	2887, 2888	15	-
F1 BRAKE LIGHTS	2431R, 2431B, 2431W	31	-
INDICATOR LIGHTS	2809, 2810	10	-
BRAKE LIGHT - 1016 MODEL	2811	10	-
INDICATOR LIGHTS - DELUXE MODEL	ALL PART NUMBERS	100	-
LED MINI SIDE INDICATOR - WATER PROOF	3904, 3905, ALL COLOURS	20	-
LED SIDE LIGHT - 288 SMALL FLAT MODEL	3906A, 3906BG, 3906RG, 3906RB, 3907A, 3907BG, 3907RG, 3907RB	10	180
LED INDICATOR LIGHT - 288 BIG FLAT MODEL	3916A, 3917A	30	-
LED SIDE INDICATOR - DELUXE MODEL	3908, 3909 ALL COLOURS	10	-
LED INDICATOR LIGHTS - ECO MODELS	ALL PART NUMBERS	250	-
LED INDICATOR LIGHTS - 6 LED - ST PIN	ALL PART NUMBERS	100	-
4 CHAMBERS	ALL PART NUMBERS	-	24
3 CHAMBERS	ALL PART NUMBERS	-	40
	FOR 6 & 8 LED FOG LAMPS	5	75
	FOR 9, 12 & 16 LED FOG LAMPS	4	48
FOG LAMPS	FOR 4 LED FOG LAMPS	10	-
	FOR 9 LED MINI FOG LAMPS (ROUND & SQUARE)	10	200
	FOR 2883, 2884, 2885, 2886, 2894W, 2894Y	-	-
	FOR 2895W, 2895Y	-	30
LED TAIL LAMP MINI	4001, 4002, ALL COLOURS (A,B,G,R,W)	10	-
LED TAIL LAMP MAX	4003, 4004 ALL COLOURS (A,R,W)	5	-
LED HEAD LAMP	4101	-	60
BATTERY TERMINALS	ALL PART NUMBERS	1 Dozen	5 Dozen
	101, 101A, 102A, 111, 113	120	-
	103, 104A, 105, 106, 112	100	-
MINIATURE AUTO BULBS	107, 108, 110	240	-
	109	60	-
LED SIDE INDICATOR DLX	3918, 3919 ALL COLOURS	120	-
BULB TESTER	2203	-	-
FLASHING LIGHT	2891W, 2891B, 2891G, 2891R, 2891RB, 2891RG	20 Set	480 Set
REVERSE HORN - HIGH SOUND	4121	-	50
CIGARETTE LIGHTER - DELUXE	4131	10	-
CIGARETTE LIGHTER - ORDINARY	4132	20	-
POWER SOCKET	4133	20	-
HANDLE BAR LIGHT	2893, 2893B	20	-
CABLE TIE	ALL PART NUMBERS	100	-



SUPER

Auto Electrical Products



Distributors:

M.N. AUTO PRODUCTS PVT. LTD.

5/644-C, THADAGAM ROAD, KANUVAI P.O., COIMBATORE - 641 108

Tel: 0422 - 240 2231, 240 2234. Mobile: 095971 86666

Email : sales@supermnauto.com

WEBSITE : www.supermnauto.com